



SHE NEITHER CONFIRMS NOR DENIES

WILFUL DAMAGE

An Original Digital Miniseries Treatment
By Michael Pogorelsky

© 2022 Mikhail Pogorelskii
WGAE registered

THE STORY

SYNOPSIS (SEASON 1)

Wilful Damage is a crime drama thriller about a vicious US agent discharged after she turns against her superior's illegal drug trade. She starts to secretly "fix the world" as an Advisor in London, consulting corporations on crisis prevention. Advisor is forced to team up with a Russian Defector, who calls poisons her toys, and adds reason and a supercar to the table. The quarreling duo's task, to assess political leverage of an offshore gas pipeline project, gets messy after Advisor is burned alive in a failed hit on Defector. They don't care about money, enemies or winning anymore. Has the world gone insane? Define normal.

THE PROJECT

TITLE	<i>Wilful Damage</i>
LOGLINE	Two subversives, an unhinged femme fatale and a ruthless defector lady, are obsessed with maintaining the balance of power in the new Cold War. Their plan backfires.
GENRE	Crime / Drama / Thriller
THEMES	<i>Wilful Damage</i> will explore the themes of obsession, exchange and power.
TONE	The project is set as a neo-noir in a dark humor tone with an homage to comics, horror and erotic. A couple of intense but rapid action scenes toward the finale will contribute to the genre.
THE ROAD-MAP	<i>Wilful Damage</i> is an original treatment for a digital miniseries. In Season 1, five episodes are planned, 55-60 min runtime each.
STAGE OF PRODUCTION	Treatment
MATERIALS	Pitch video Treatment
The materials are available upon request.	Poster EPK



ARTIST'S STATEMENT

CENTRAL CHARACTER'S ORIGIN

Michael is an engineer turned writer. In the semiconductor industry, dealing with corporate espionage is part of business. Michael once managed a lab equipment export certification. The certifier's expert, Tom, openly took pictures of the manufacturer's lab. Tom said: "You are well prepared. I can just list some corrections. I am not the designer of your system." Michael replied: "Just give us a list, and we shall see if we need it."

Later, Michael thought: "This guy is a walking disclaimer. Can there be a freelancer who gives advice to a person cruising in her car?" It should naturally be a female character with a tech background, probably an ex-spy with a dark past. Maybe, to fix problems in the outer world is just easier for her than fixing her own?

WHY IS HARLEY QUINN AN INSPIRATION?

Dark humor makes Harley a vivid character; she is so mercurial she also drives the action. These two qualities are, in fact, the same. She is the story. Michael has worked a lot with people, and the toughest ones always exhibit this side. Expand to spies, arms dealers or politicians. Harley they are: "Hi. I'm nuts. Are you? Great! Let's have a drink. Oh, meet my friend. Hannibal, join us, would you?"

AUTHOR'S RELEVANT EXPERIENCE

Work in a research lab implies certain occupational hazards. Michael got exposed to toxic chemicals and poisoning symptoms. It was unpleasant. He participated in Basic practical training on Nonviolent Communication with the CNVC and read Gary Noesner; negotiation is a core competence for intelligence specialists.

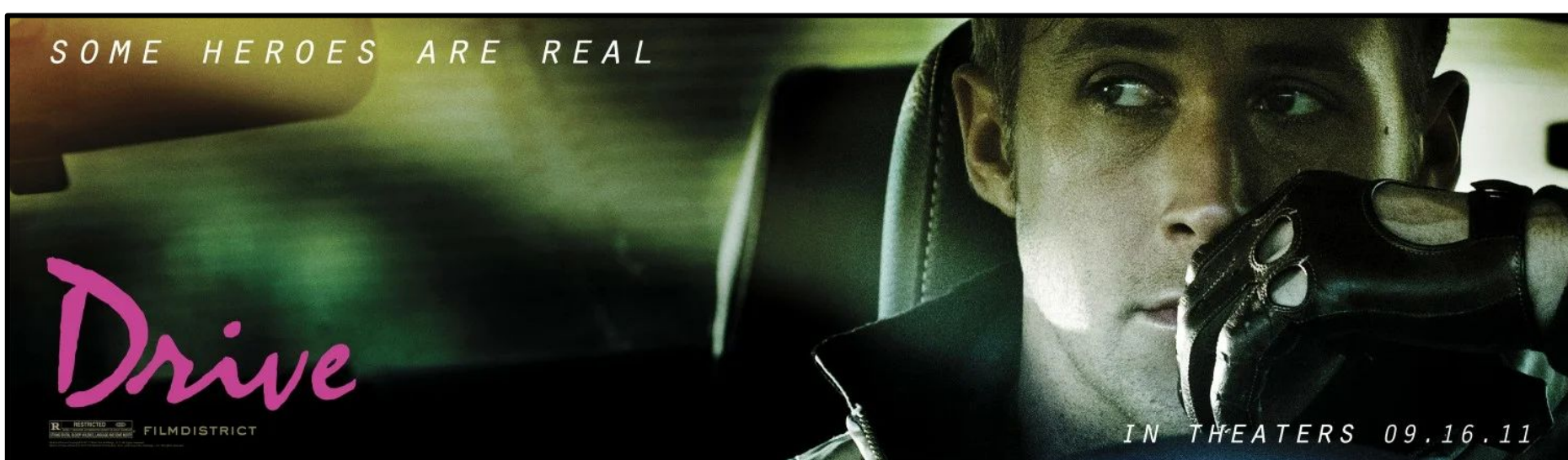
HISTORICAL & POLITICAL CONTEXT

Initially, the character lacked her story and context, so Michael put the idea aside. Lately, the historical and political life has been so cumulative it transcended conclusive evidence to become common knowledge. The story kind of wrote itself.



VISUAL INSPIRATION: CHIAROSCURO

MOODBOARD





HEART OF THE STORY

TRADECRAFT: A UNIVERSAL LANGUAGE

Technology was born into espionage, bred into it. Phosgene, a World War I chemical weapon, is used to manufacture bullet proof glass and prosthetics. This is a dual use technology. Elaborately, a trained professional is an asset and / or a weapon. Why? It's personal, and it's specific. A special forces guy is one bad day from becoming a most wanted man (a defector). Or, a person is aware that leaking sensitive information may save lives (a saboteur).

Most sensitive information, if leaked, though, would not make a significant difference. Hacking a person's phone is often more expensive than ignoring that person. Actually, it is cheaper to contact the person and say: "Please don't do that." It works. Wake up a spy? Brush your teeth a spy? Please.

KEY CHARACTER TRANSFORMATIONS

"Goodness . . . You got to make it out of badness . . .

Because there isn't anything else to make it out of." - Governor Willie Stark

Robert Penn Warren, *All the King's Men*

THEMES *Wilful Damage* is about obsession, exchange and power.

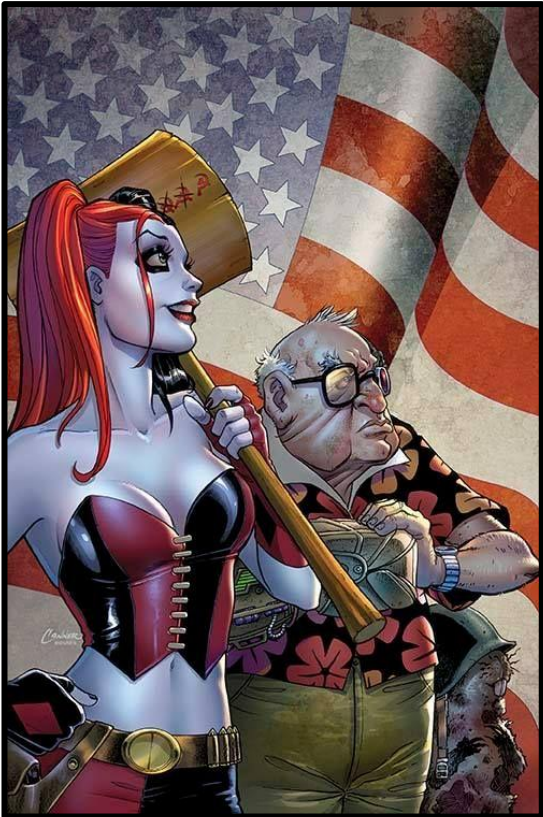
CHARACTER ARCS At the beginning, the characters are damaged and self-denying. They are obsessed with their goals (the power to either "fix the world" or "let it burn"), though deeply inside, they are obsessed with their pain. Along their journey, they push themselves and each other to grow and give up their ambition to achieve realistic goals.

THE ENDING The characters maintain a strategic balance over change, choosing the lesser of two evils (exchange). It is a "lose-lose" situation for big political players, but a personal growth for the characters. Their real power is an understanding that their craft and principles transcend money, status, or such categories as an enemy or a win by itself.



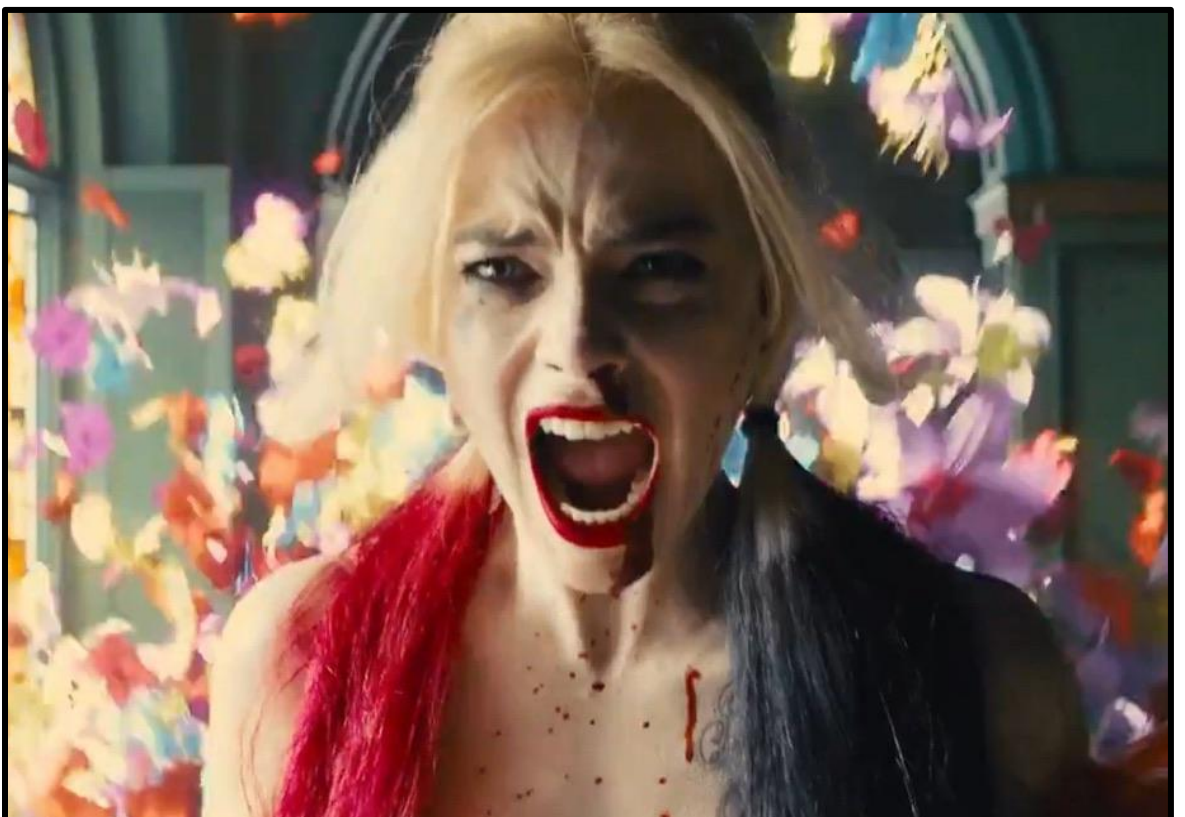
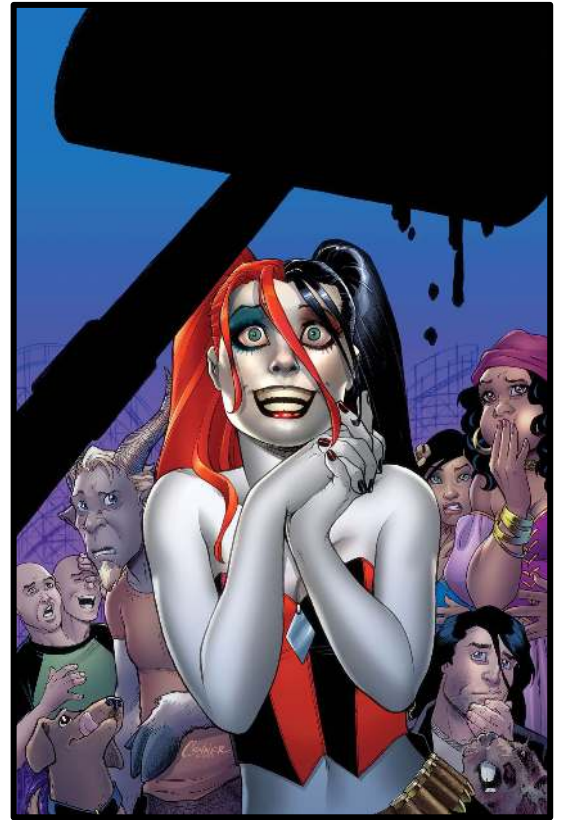
INSPIRATIONAL ANTIHERO: HARLEY QUINN

MOODBOARD



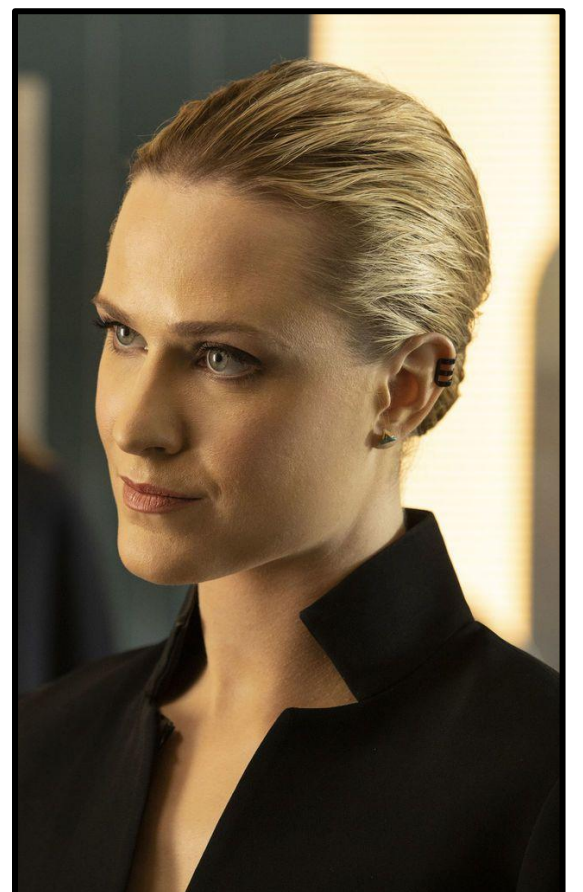
“Number 1:
No one is
like me.” -

Harley
Quinn



FEMME FATALES: INSPIRATIONAL CHARACTERS

MOODBOARD





CENTRAL CHARACTERS: TOUR DE FORCE

MAIN PROTAGONIST

ADVISOR

“You sit in the rear seat of my car. You pay for staying warm, I guarantee the heater works. I give you a twenty minute window to state your purpose. I am not a part of your business, nor do I make decisions. I say what I mean. Don’t call this phone again.”

Finesse as a Seventeenth century Dutch painting, with nuclear fire burning in her eyes, Advisor is an expert tambourine player addicted to ice-cream. Harley Quinn filtered through Anton Chigurh, working dirty is her talent. She is off her rocker, all right, so what about the rest of the world? Define normal. We see the other characters through her perception and attitude toward them. Her talent is listening and inciting the moment of truth in others.

OTHER CHARACTERS

DEFECTOR

“Rule number one: use “the” correctly. The Russians misuse it. Rule number two: wash your hands after poisoning a person. Rule number three: the results of sticking a VHS up your ass won’t be constructive. Never, ever go public.”

Advisor’s ever-fighting collateral is the Russian Defector lady who calls poisons her toys and adds reason, dark humor and a supercar to the table. She is a race driver. After Advisor’s Alive Day, Defector tells her partner the new look reveals her true identity. Defector never lets Advisor drive her car, which makes Advisor crazy.

PISTSOV AND VANTUZOV

When the Russian intelligence needs dirty work done, this duo is a natural choice. Their reputation precedes them: Pistsov and Vantuzov hit a new low daily (twice a day if they are in the mood). And after the mission is complete, they are not needed anymore. Inseparable as Tyrion and Varys (or as Beavis and Butt-Head), constantly bored, hapless and lonely. Abandoned by everyone but resilient in their quest to achieve the happiness of all mankind, they search for a new home. Seems like they have not killed anyone in London yet, so London will do.



MARKET REVIEW

THE AUDIENCE

Wilful Damage is set as a neo-noir in a dark humor tone with an homage to comics, horror and erotic to target the same audiences as *Drive*, *Atomic Blonde*, and *Taboo*. A couple of intense but rapid action scenes toward the finale will contribute to the genre. Inspirational characters that influenced the author's vision are Erin (*Destroyer*), Cersei (*Game of Thrones*), Leilah (*Bright*).

THE ROUTE TO THE MARKET

THE TARGET MARKET: Netflix, HBO, BBC

THE PRODUCTION COMPANIES who work within the relevant market sector, to name a few:

UK Hardy, Son & Baker (*Taboo*), Jewson Film (*Close*), Raindog Films (*Official Secrets*), Flying Studio (*Mank*), 42 (*The Courier*), RedRum Films (*All the Money in the World*), Potboiler Productions (*Trespass Against Us*), Reprisal Films (*The Guard*), Marv Films (*The King's Man*)

US Blossom Films (*The Undoing*), Peephole Productions (*The Trap*), Denver and Delilah Productions (*Atomic Blonde*), LuckyChap Entertainment (*Terminal*), Excellent Cadaver (*Project Delirium*), MWM Studios (*Drive*), Chernin Entertainment (*The Drop*), Crave Films (*Sabotage*), BZ entertainment (*War Dogs*), Plan B Entertainment (*Vice*)

DETAILED WRITTEN PROPOSAL

The project is at the treatment stage. The writer, Michael Pogorelsky, has registered the synopsis with the WGAe, completed a pitch video and EPK. The project origin is Russia; the writer is not a native English speaker. To add value, Michael assumes referring to a native-speaking script doctor during pre-production.

Michael sees an ideal partnership for the project as work with a lead actress with her own niche production company, so that the genre and tone of the project goes well along with her recent works. Her degree of involvement, such as the lead role, directing and / or producing, would be, of course, up to her consideration.

ABOUT THE AUTHOR

MICHAEL POGORELSKY



Michael is an engineer turned writer, and a fan of spy thriller films. His recent screenplay, *Aces Beyond*, was Officially Selected by the 2020 Military Story Showcase. He took part in the AFM 2020 Online and the EFM 2020. Michael is excited about *Wilful Damage*, as it is based on his semiconductor industry experience, such as dealing with corporate espionage or exposure to toxic chemicals. He also participated in Nonviolent Communication training with the CNVC and read Gary Noesner.

CONTACT

Michael Pogorelsky
Based in Saint Petersburg, Russia
Email: m.pogorelsky@gmail.com
IMDbPro: [nm10299196](https://www.imdb.com/name/nm10299196/)

ALL CHARACTERS AND EVENTS ARE FICTITIOUS. ANY SIMILARITY TO THE NAME OR TO THE ACTUAL CHARACTER OR HISTORY OF ANY PERSON, LIVING OR DEAD, OR ANY PRODUCT, OR ENTITY, OR ACTUAL INCIDENT OF THE PRESENT AND THE PAST ARE ENTIRELY COINCIDENTAL.

